

LEGEND

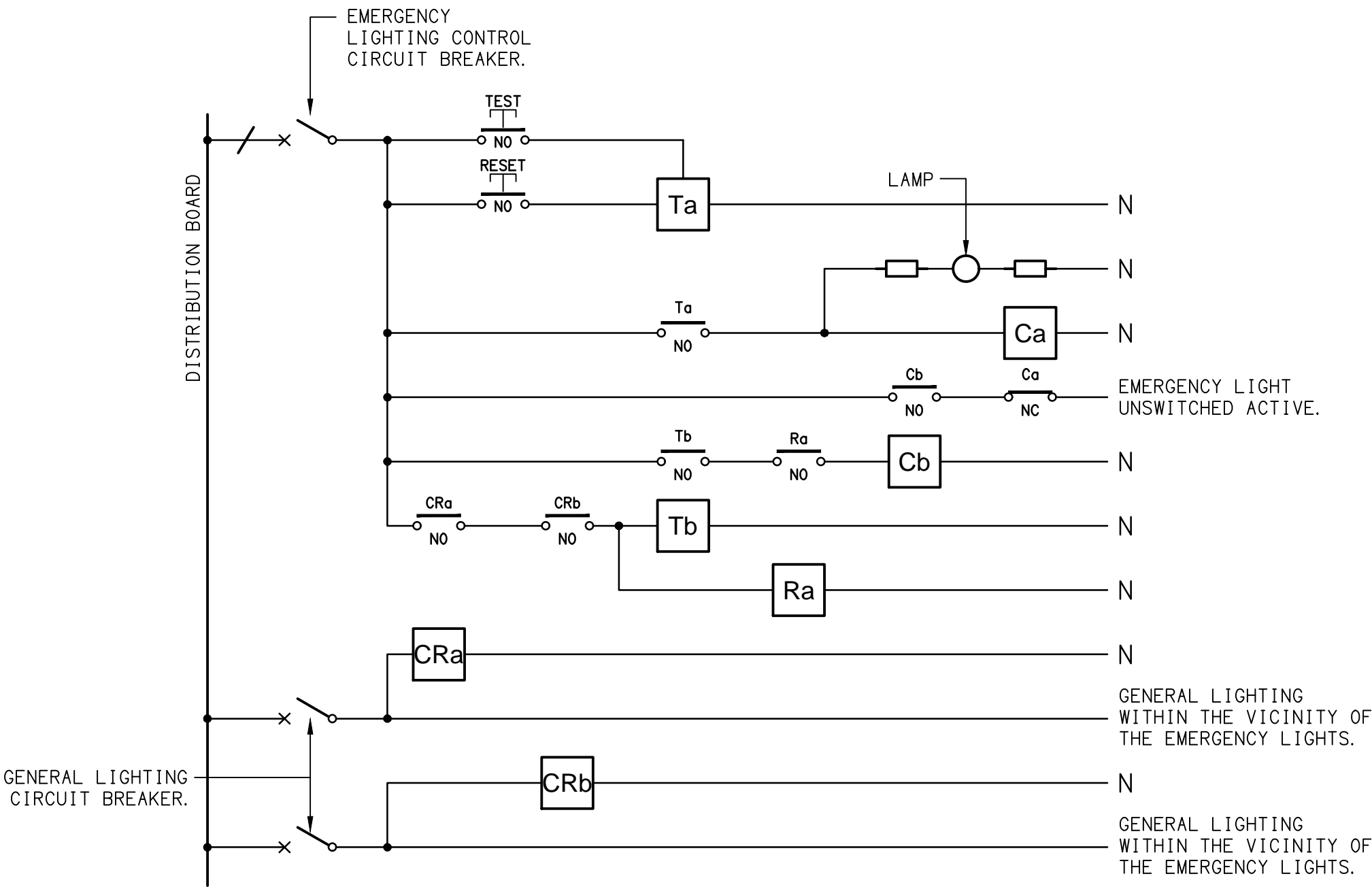
	ELECTRICAL SERVICES SWITCHBOARD.
	SWITCHBOARD / CONTROL PANEL NOT PROVIDED AS PART OF THE ELECTRICAL SUBCONTRACT.
	SINGLE POWER OUTLET.
	DOUBLE POWER OUTLET.
	DOUBLE POWER OUTLET C/W USB CHARGING PORTS.
	GAMING / TAB OUTLET BY GAMING ELECTRICIAN.
	SIGNAGE CONNECTION.
	SINGLE PHASE ISOLATOR.
	THREE PHASE ISOLATOR.
	CONDUIT ROUTE.
	HAND DRYER CONNECTION.
	LIGHTING CONTROL SWITCHPANEL, TYPE x.
	LIGHTING PROXIMITY DETECTOR SWITCH.
	ONE WAY LIGHT SWITCH.
	TWO-WAY LIGHT SWITCH.
	CIRCUIT LINE.
	SWITCH LINE.
	POWER CIRCUIT DESIGNATION. DENOTES DB AND CIRCUIT.
	LIGHTING CONTROL CHANNEL REFERENCE.
	ELECTRICAL EQUIPMENT AS NOTED.
	REFER TO DETAIL NOTED FOR THE AREA SHOWN HATCHED. ADDITIONAL OUTLETS & FITTINGS MAY BE SHOWN ON DETAIL.
	FIRE INDICATOR PANEL.
	FIRE ALARM MANUAL CALL POINT.
	FIRE ALARM STROBE / BELL.
	FIRE ALARM AUTO DOOR INTERFACE.
	FIRE ALARM CEILING SPEAKER.
	FIRE ALARM WALL SPEAKER.
	Sx: LED JOINERY / CEILING STRIP LIGHT, TYPE AS NOTED.
	E1: GENERAL CEILING RECESSED LED EMERGENCY LIGHT, WHITE.
	E2: GENERAL WALL RECESSED LED EMERGENCY LIGHT, WHITE.
	E3: GENERAL CEILING SURFACE LED EMERGENCY LIGHT, BLACK.
	E4: GENERAL WALL RECESSED LED EMERGENCY LIGHT, BLACK.
	EX: EMERGENCY LED EXIT LIGHT, WHITE UNLESS NOTED AS BLACK (BK).
	PD01: DECORATIVE SUSPENDED PENDANTS AS NOTED.
	PD02: DECORATIVE SUSPENDED PENDANT.
	PD03: DECORATIVE SUSPENDED PENDANT.
	PD04: DECORATIVE SUSPENDED PENDANT.
	PD05: DECORATIVE ROPE LIGHT.
	PD06: DECORATIVE SUSPENDED PENDANT.
	PD07: DECORATIVE AMENITY SUSPENDED PENDANT.
	TL01: SURFACE TRACK LIGHTS, BLACK.

LEGEND

	RD01: RECESSED DOWNLIGHT, BLACK.
	RD02: RECESSED DOWNLIGHT, WHITE.
	RD03: RECESSED ADJUSTABLE DOWNLIGHT, BLACK.
	RD04: RECESSED ADJUSTABLE DOWNLIGHT, WHITE.
	RD05: RECESSED DOWNLIGHT, WHITE.
	RD06: RECESSED ADJUSTABLE DOWNLIGHT, WHITE.
	RD07: RECESSED DOWNLIGHT.
	RD08: RECESSED DOWNLIGHT, BLACK.
	RD09: RECESSED DOWNLIGHT, BLACK.
	GL01: GARDEN SPIKE LIGHT, BLACK.
	G1: GAMING MACHINE BASE KICK LED STRIP LIGHT.
	BL01: TREE BUD LIGHTS.
	FS01: FESTOON LIGHTS FIXED TO STAINLESS STEEL WIRE SUPPORT.
	FS01E: EXISTING FESTOON LIGHT TO BE REPLACED.
	SL01: SURFACE MOUNTED DOWNLIGHT, BLACK.
	SL02: SURFACE MOUNTED ADJUSTABLE SPOT LIGHT, BRUSHED STAINLESS STEEL.
	SL03: SURFACE MOUNTED SPOT LIGHT, WHITE.
	L1: 1200 LONG IP66 SURFACE BATTEN LIGHT.
	F01: 2400 DIA CEILING FAN.
	FC: CEILING FAN CONTROLLER.
	HC: HEATER CONTROLLER.
	HL01: PENDANT HEAT LAMP.
	HR01: EXTERNAL HEATER.
	HRE: EXISTING EXTERNAL HEATER.
	WL09: ADJUSTABLE UPWARD FLOOD LIGHT.
	WL10: DECORATIVE IP65 WALL LIGHT.
	WL11: ADJUSTABLE SPOT LIGHT.
	WL12: WALL MOUNTED SPOT LIGHT.
	MC: RGB MASTER CONTROLLER.
	SC: RGB SLAVE CONTROLLER.

EQUIPMENT:

- TEST – TEST PUSH BUTTON MOUNTED ON THE DISTRIBUTION BOARD ESCUTCHEON.
- RESET – RESET PUSH BUTTON MOUNTED ON THE DISTRIBUTION BOARD ESCUTCHEON.
- LAMP – AMBER TEST INDICATING LAMP MOUNTED ON THE DISTRIBUTION BOARD ESCUTCHEON.
- Ta – ADJUSTABLE 0-3 HOUR TIMED RELAY.
- Tb – 15 MINUTE RUN-ON TIMER TO OPERATE UPON THE RETURN OF MAINS POWER.
- Cx – CONTACTOR x.
- CRx – CONTROL RELAY x.
- Rx – RELAY x.

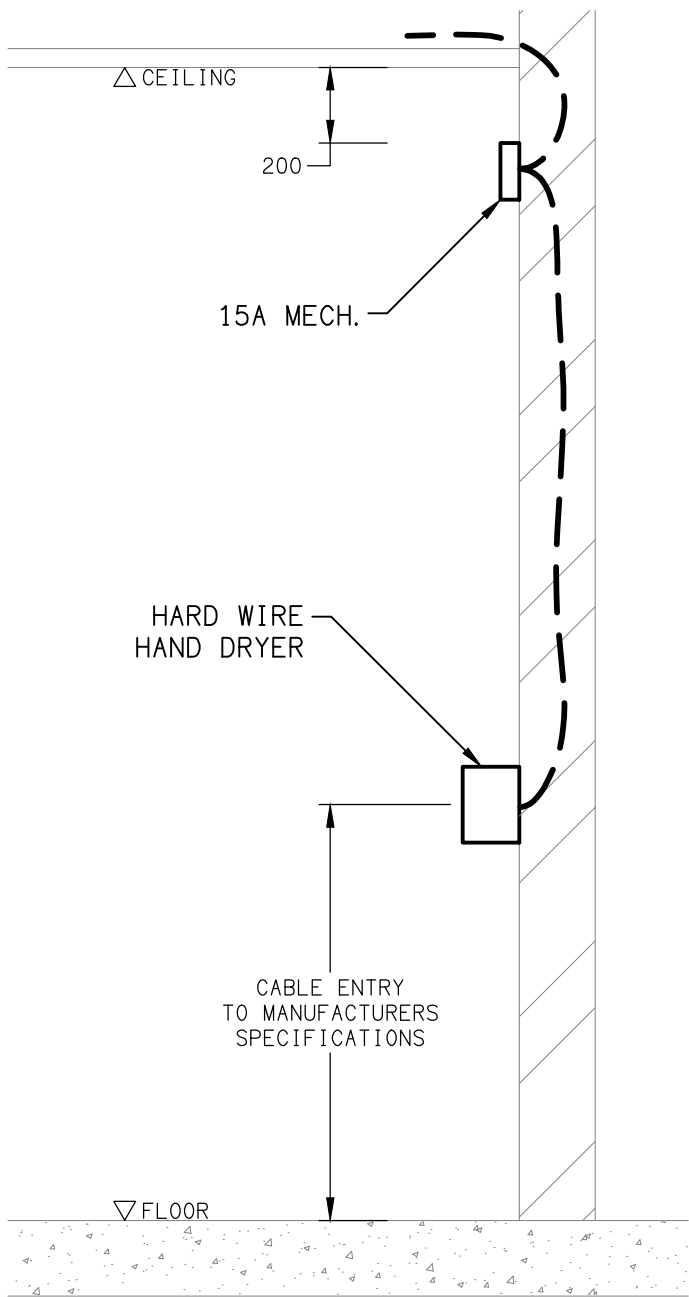


NOTES

1. THE EMERGENCY LIGHT UNSWITCHED ACTIVE / GENERAL LIGHTING SWITCHED ACTIVE CIRCUIT ARRANGEMENT AND CONTROL IS TYPICAL FOR ALL CIRCUITS SUPPLYING EMERGENCY LIGHTS.
2. PROVIDE ADDITIONAL CONTROL RELAYS (CRx) CONFIGURED AS PER CRa AND CRb FOR ALL ADDITIONAL LIGHTING CIRCUITS THAT SUPPLY LIGHTS IN THE VICINITY OF THE EMERGENCY LIGHTS.

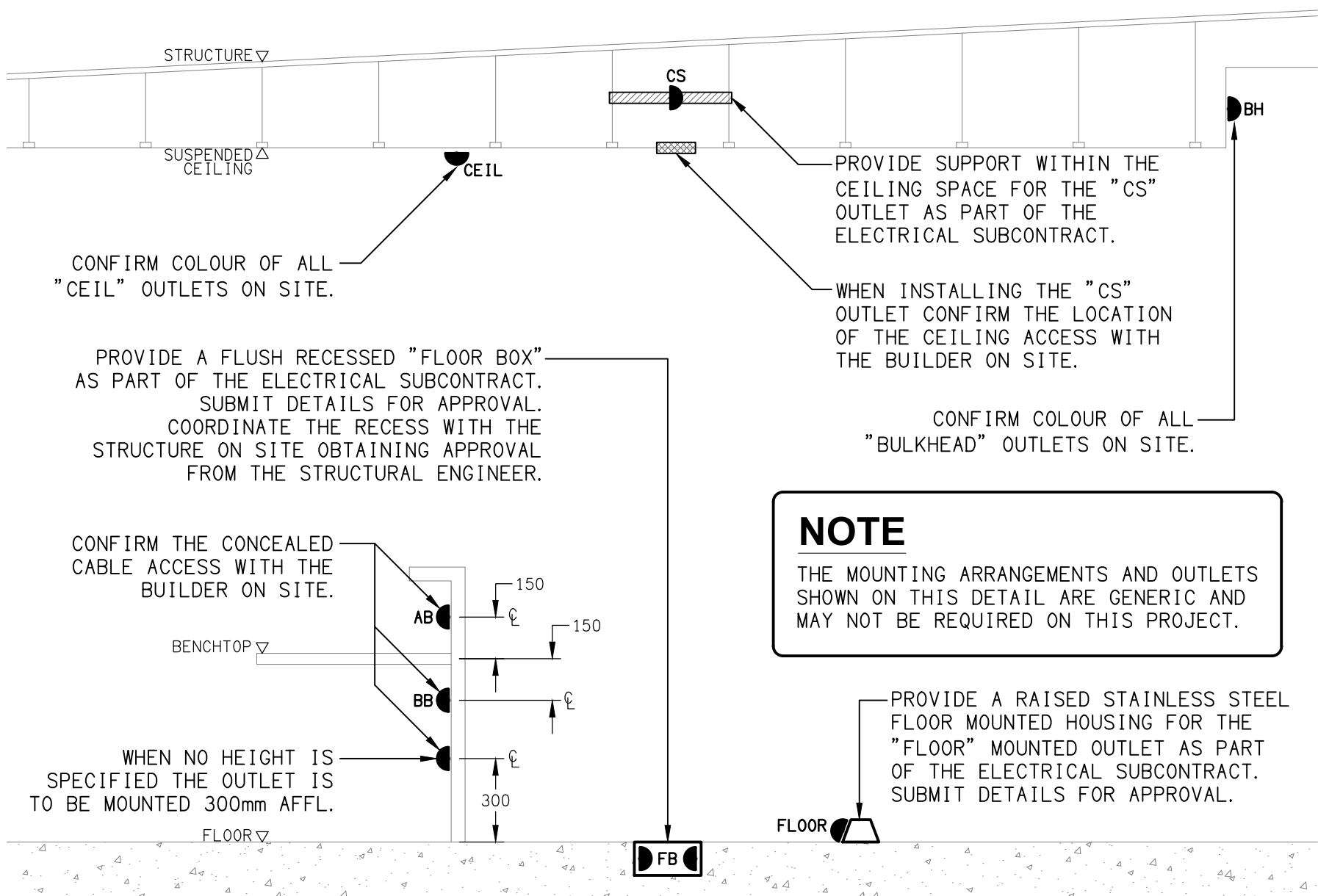
SCHEMATIC

EMERGENCY LIGHTING
NOT TO SCALE



DETAIL

HAND DRYER CONNECTION
NOT TO SCALE



DETAIL

TYPICAL OUTLET MOUNTINGS
NOT TO SCALE

THE COPYRIGHT OF THIS DRAWING REMAINS THE PROPERTY OF THE ELECTRICAL DESIGN GROUP.

USE FIGURED DIMENSIONS IN PREFERENCE TO SCALE.

ALL DIMENSIONS TO BE VERIFIED ONSITE.

C	TENDER	13/10/2025
REV:	DESCRIPTION:	DATE:

ELECTRICAL DESIGN GROUP
ELECTRICAL BUILDING SERVICES CONSULTANTS

BRISBANE: P.O. Box 15 Sherwood Qld 4075
Phone: (07) 3278 4375
Email: brisbane@edg.net.au
Web: www.edg.net.au

ELECTRICAL DESIGN GROUP BRISBANE PTY LTD
ACN 092 710 793

TRADING AS:
ELECTRICAL DESIGN GROUP

PROJECT:

BENOWA TAVERN

SITE ADDRESS:

117 ASHMORE ROAD, BENOWA
GOLD COAST

SCALE: SHEET SIZE:

NOT TO SCALE AT A1

DRAWING TITLE:

**ELECTRICAL SERVICES
LEGEND & DETAILS**

PROJECT NO: DRAWING NO: REVISION:

C3600a E01 C